

# CCH50T

## General-Purpose Compact Telescopic Crane

Lifting capacity (JIS) **4.8** metric tons

*Versatile lifting in confined areas  
Full 360 degree turning on  
4 meter roads*

*Lifts and carries up to 2 tons  
Rubber crawlers—excellent on  
rough or soft terrain and*

*damage-free on paved surfaces  
Comfortable and safe operation*

*Designed for environmental acceptability*

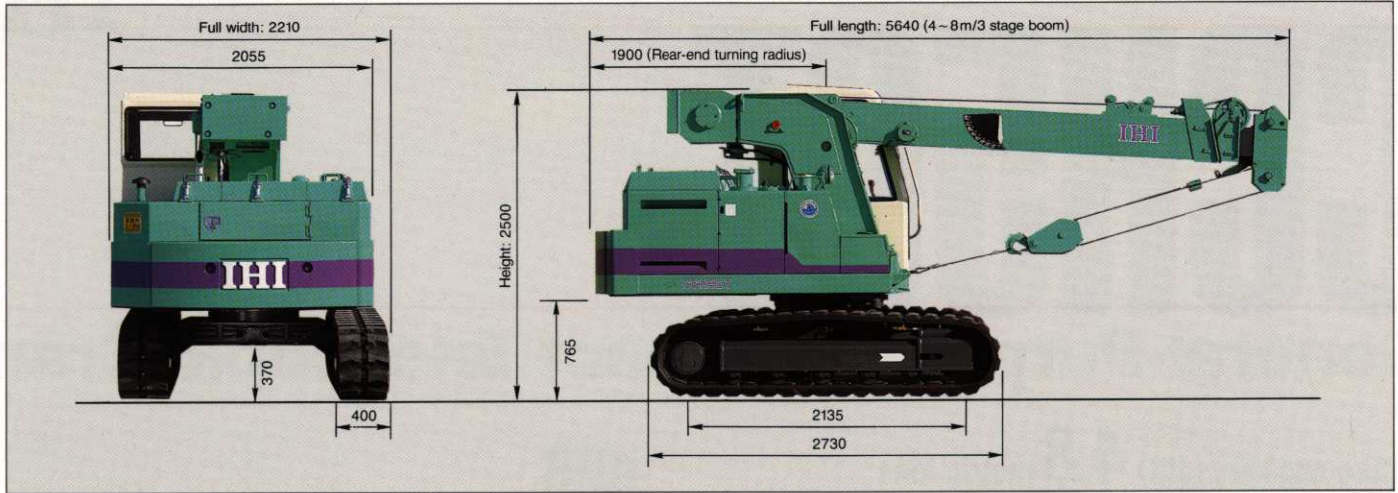


### ■ Specifications

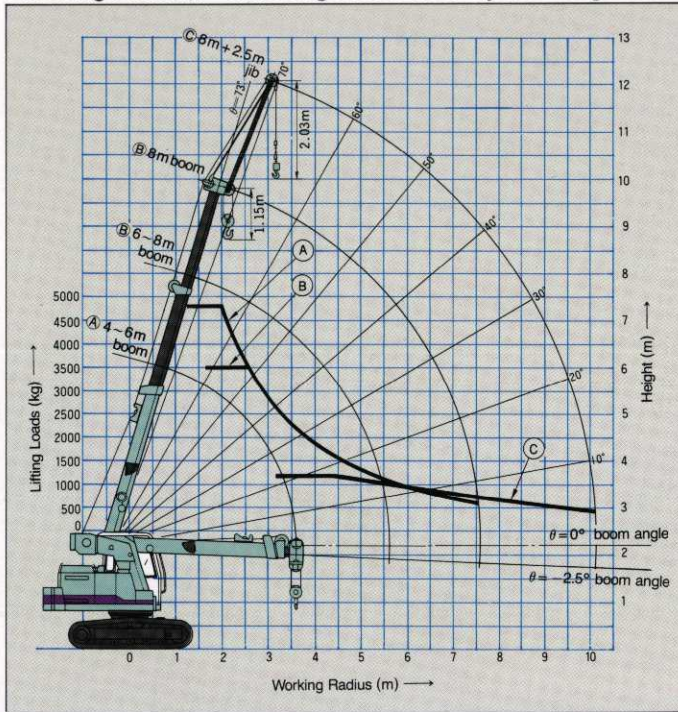
Performance	
Max. lifting load × working radius	4.8 ton × 2.0m
Max. total lifting height (4 part lines)	12.2m (wire rope length of 80m) 22.2m (wire rope length of 120m)
Load hoisting/lowering rope speed	56m/min (3rd layer on drum)
Boom hoist speed	14.5 sec./ -2.5° ~ 73°
Boom extension speed	11.5 sec./4m ~ 8m
Swing speed	2.6 rpm
Gradeability	40% (22°)
Travel speed	2.7km/hr
Total weight (with 4 ~ 8m boom)	7970kg
Average ground bearing pressure	approx. 0.47kg/cm <sup>2</sup>
Engine	
Model	ISUZU 4BDI diesel engine
Rated output	77 PS/2200 rpm
Max. torque	25.0kg·m/1400 rpm
Fuel tank capacity	110ℓ



■ General Dimensions (Unit: mm)



■ Working Radius (4~8m/3 stage boom + 2.5m jib) . Lifting Loads



■ Rated Lifting Loads (4m~8m main boom)

Working radius (m)	Main boom: 4m~6m under		Main boom: 6m over~8m	
	Fixed Operation, 360° A kg	Carrying Operation, 360° (kg)	Fixed Operation, 360° (kg)	Carrying Operation, 360° (kg)
2.0	4800	2000	3500	2000
2.2	4300	2000	3500	2000
2.5	3700	2000	3500	2000
2.6	3500	2000	3500	2000
3.0	2870	1640	2870	1640
3.5	2310	1320	2310	1320
4.0	1890	1080	1890	1080
4.5	1580	900	1580	900
5.0	1350	770	1350	770
5.5	1150	650	1150	650
6.0			960	540
6.5			800	450
7.0			690	390
7.5			580	330

■ Rated Lifting Loads (2.5m jib option)

Main boom angle	73°	70°	60°	50°	40°	30°	20°	10°
All direction/360° (kg)	1200	1200	1060	830	660	500	410	380

Notes and Cautions

- All rated lifting loads (throughout 360 degrees, within 78 degrees of tipping load, forward stability factor over 1.15) shown are based on the machine being on a firm, level and uniform supporting surface without travelling.
- The weight of hook blocks and slings or auxiliary lifting devices shall be included as part of the rated lifting loads.  
Main hook (4.8 ton)—70kg  
Jib hook (1.2 ton)—20kg
- Rated lifting loads for carrying operation are based on operation on firm and level surface after load has been lifted from the ground on fixed operation. In carrying operation, keep loads close to ground and do not allow swinging.
- No abrupt start, stop, turn or spin should be allowed while carrying loads.
- Do not raise or lower, or extend or retract booms while hoisting loads.
- Lifting loads are limited to the following ratings.  
up to 4.8 tons—4 part lines (main hook).  
up to 1.2 tons—1 part line (jib hook).
- Wire rope diameter for main and jib hook/10mm.  
Wire rope type for main and jib hook/6×Fi(29) IWRC/B type/guaranteed breaking strength 6.89 tons.
- The rated lifting loads of the jib are only determined by the angle of main boom.

Sole UK Distributor :



A Division of AGD Holdings Limited

“Vineries House”  
150 Woodcock Lane North  
Acocks Green  
Birmingham B27 6SL  
England

Telephone 021 707 6565  
International + 44 21 707 6565  
FAX 021 707 8902  
Telex 338122 AGD G